

- FIRE STANDARDS TO BE ACHIEVED**
- Doors and partitions required to be fire resisting are to be in accordance with BS476, as amended.
 - Fire resisting doors required to resist the passage of smoke at ambient temperature conditions should, unless tested in accordance with BS476, section 31.1, 1983, be fitted with a smoke seal, intumescent strips and positive self closing device.
 - Fire alarm to comply with BS5839, part 1 2002. Installing engineer to consult with Fire Authority.
 - Emergency lighting installation is to comply with BS5266, Part 1 2005.
 - Installing engineer to refer to paragraph 3.1 of BS266 part 1 in particular reference to consultation with Fire Authority.
 - Fire safety related signs and notices to conform to BS5499, part 1, (incorporating running man symbol on fire exits) and other pictograms as required.
 - Maintained illuminated 'Fire Exit' signs required over all fire exits and to indicate escape routes are to conform to BS2560.
 - Fire fighting equipment to comply with BS EN3.
 - Upholstered seating furniture to satisfy as minimum standard ignition source 0 and Crit ignition source 5 as specified in BS5852, 2006, clause 11, methods of test assessment of the ignitibility of upholstered seating by smouldering and flaming ignition sources.
 - Curtains and other textile hangings must be inherently flame retardant or be treated with a durable flame retardant. They must be capable of complying with the Type B performance requirements of BS5967, part 2, 1980 - specification for fabrics for curtains and drapes-flammability requirements.
 - Textile floor coverings should be tested to BS4790 (effects of small ignition source hot metal nut method). Vertically hung textiles should conform to BS5438.
 - Artificial foliage, and other decorative effects are to be fire retardant to the satisfaction of the fire authority.
 - Wall and ceiling linings are to be class 1 surface spread of flame (as described in BS476, Part 7) in public areas, Class 0, in escape routes.
 - Test certificates should be provided in respect of Fire alarm, Emergency lighting, maintained exit signs, furniture and curtains etc.
 - Fire Exit doors All fire exit doors will discharge to a place of safety

- FIRE LEGEND**
- Maintained exit signs
 - FD30S Fire Door, 30 minutes resistance with cold smoke seals and door closer.
 - FD60S Fire Door, 60 minutes resistance with cold smoke seals and door closer.
 - N1 FIRE NOTICE SIGN
 - N2 "FIRE EXIT - KEEP CLEAR" notice
 - N3 "FIRE DOOR KEEP SHUT" notice
 - N4 "FIRE DOOR LOCKED KEEP SHUT" notice
 - N5 "PUSH BAR TO OPEN" notice

- Audible warning device.
- Audible warning device with flashing beacon.
- 230v Maintained Emergency Luminaire
- Heat detector.
- Smoke detector.
- Fire alarm panel.
- Break glass call point.
- 6 ltr AFFF foam extinguisher fixed to wall with handle 1.1m above FFL.
- 2kg CO2 extinguisher fixed to wall with handle 1.1m above FFL.
- Smoke detection to be installed within ceiling void where void exceeds 800mm deep.

- LICENCING LEGEND**
- Extent of Licenced Premises
 - Those parts of the premises to be used for licensable activities
 - See landlords / other tenants details for fire precautions outside of the line of demarcation

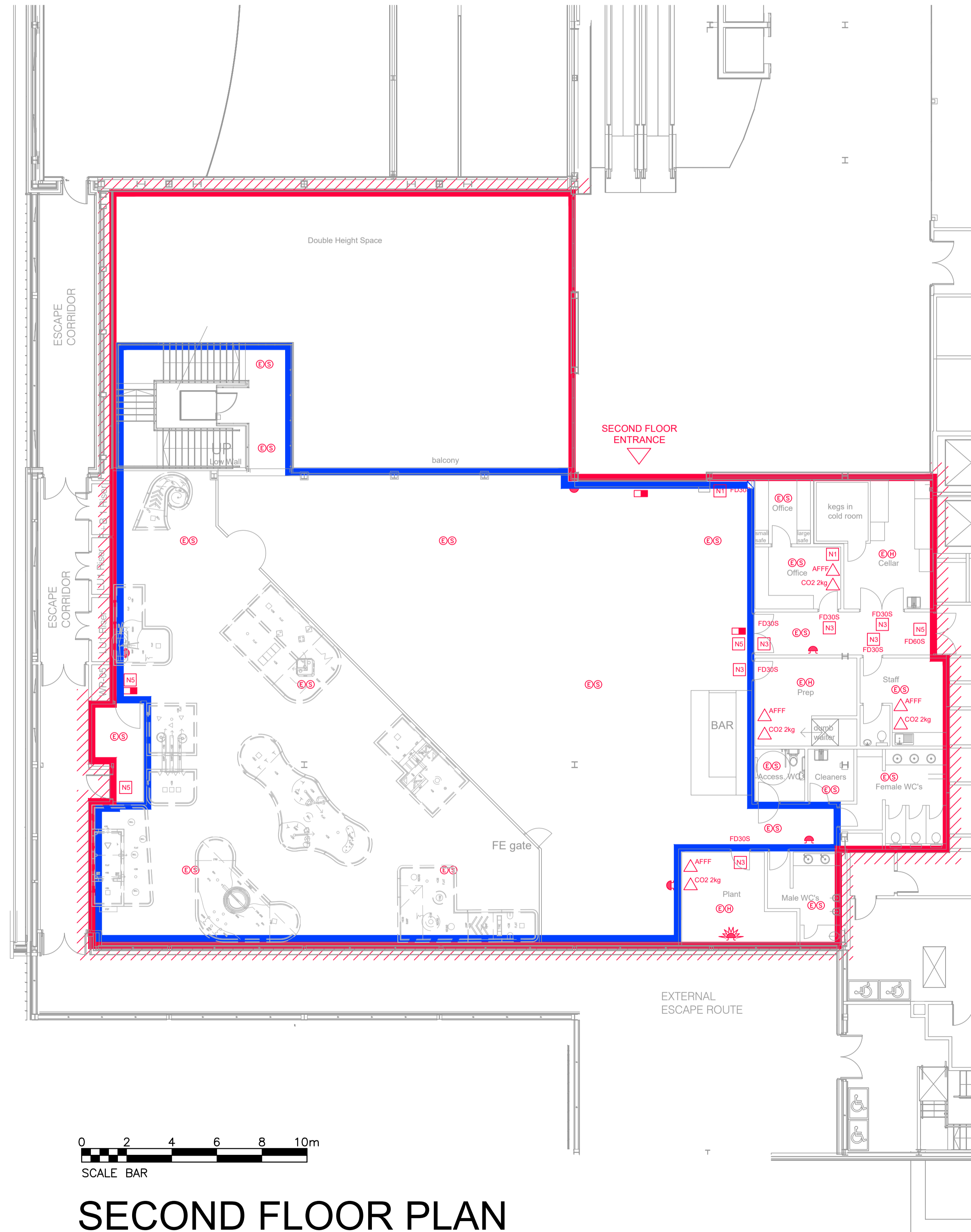
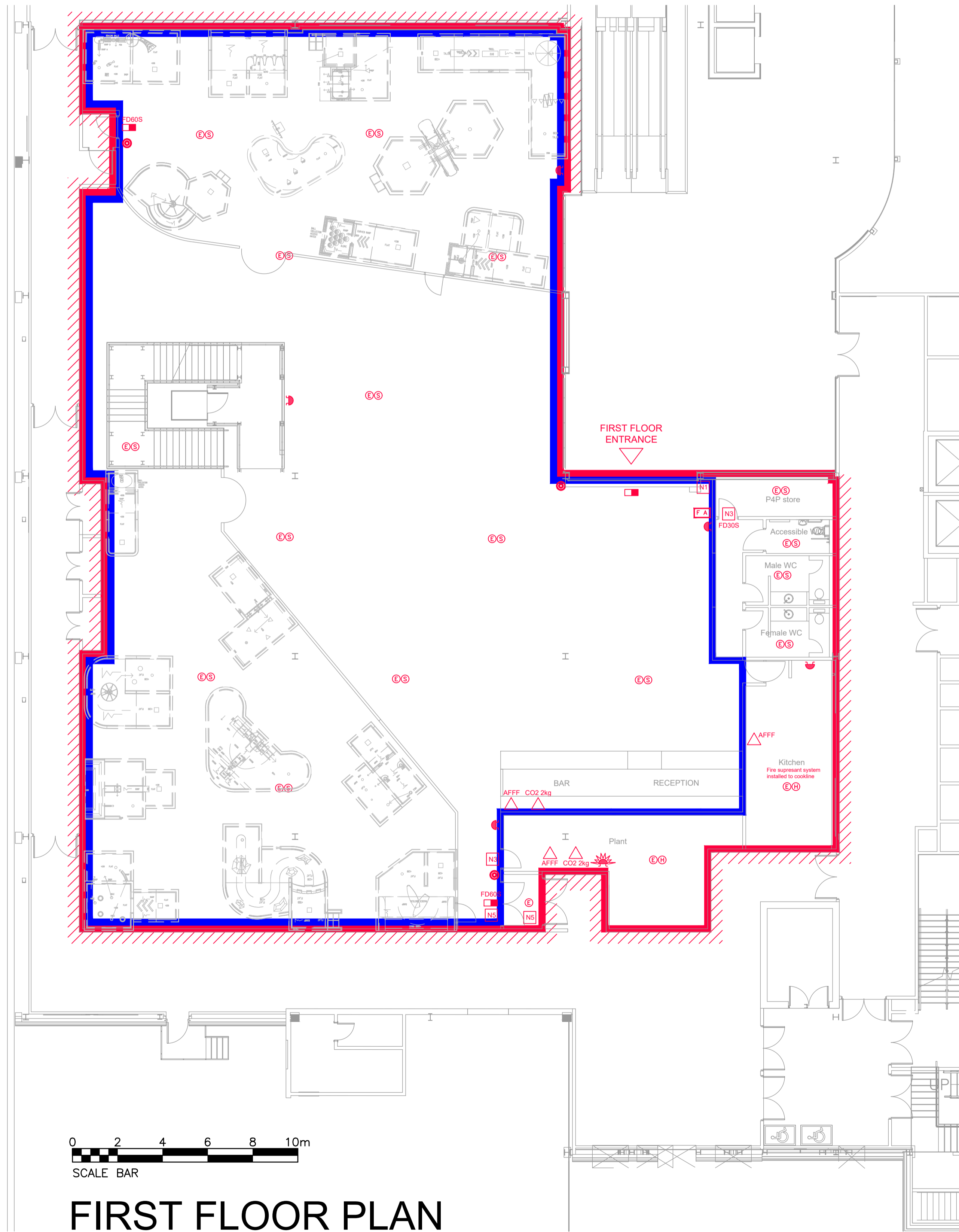
NOTES

THE CONTRACTOR IS RESPONSIBLE FOR CHECKING ALL DIMENSIONS AND NOTIFYING ALL DISCREPANCIES TO THE DESIGNER.

USE FIGURED DIMENSIONS IN PREFERENCE TO SCALED DIMENSIONS.

ALL WORK TO BE IN ACCORDANCE WITH CURRENT BUILDING REGULATIONS.

COPYRIGHT OF THIS DRAWING IS RESERVED BY G.I.A. LIMITED, AND IS ISSUED ON THE CONDITION THAT IT IS NOT COPIED, REPRODUCED OR DISCLOSED TO ANY THIRD PARTY EITHER WHOLLY OR IN PART WITHOUT THE CONSENT IN WRITING OF G.I.A. LIMITED.



REV	DESCRIPTION	DATE
A	PLAN UPDATED	22.09.22 NAS
AMENDMENTS		
CLIENT		
THE ORIGINAL BOWLING COMPANY		
JOB		
PROPOSED PUTTSTARS QUEENSGATE SHOPPING CENTRE, PETERBOROUGH		
DRAWING		
LICENSING PLAN		
JOB NO.	2943	DRAWING NO. 301 A
SCALE		
1:125 @ A1		
DRAWN BY	D.J.W....	DATE Dec ' 21



GIA LTD, 3 Foxglove Park, Common Road, Dunnington, York, YO19 5RZ.
 T 01904 481 480 F 01904 486 730 e design@gia.co.uk www.gia.co.uk
 INCORPORATED IN ENGLAND REG. NO. 2784151